



# MetroDeck Retro-Fit Panels

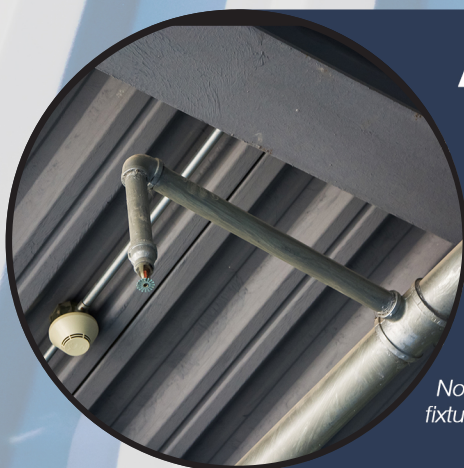
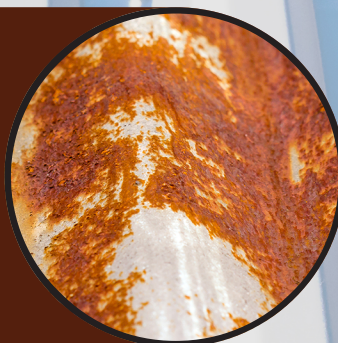
Now Available in 6" and 6 1/2" Centers

Roof Repairs Made Easy

## No More Full Replacement

for One Damaged or Rusted Through Section

*no need to replace old roof panels on a flat roof repair, simply drop new panels into the damaged areas*

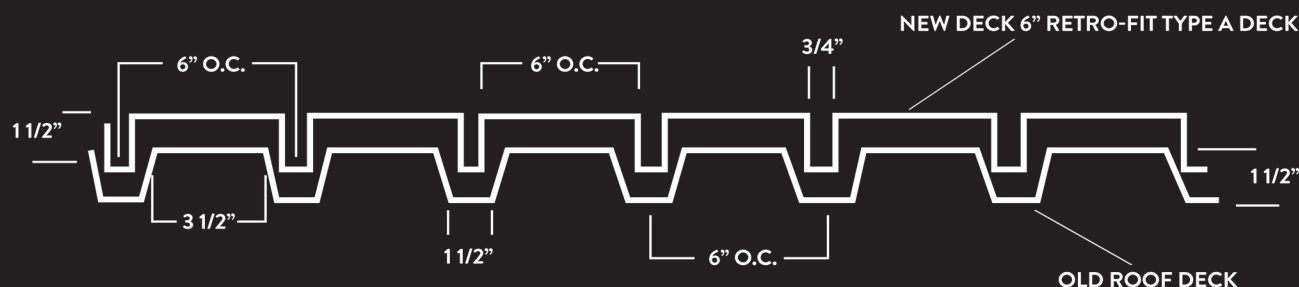


## Avoid Replacing Lights & Sprinklers

by leaving the roof structure undisturbed

*After removing all old waterproofing and debris, simply drop in new panels while not disturbing the original roofing. Lights, sprinklers and conduits remain where they are.*

Note: Not true in all cases. Dependent upon ability to fasten panels without hitting existing fixtures and structural capabilities of the roof to sustain a new panel. Retro-Fit panels must be secured at both ends to the roof joists or infrastructure.



All panels are 12' 2" long

6" Center variety is 36" wide, 6 1/2" Center variety is 26" wide

Manufactured by:



4501 Chickering Ave.,  
Cincinnati, OH 45232  
(513) 541.4370

[cincinnati-metro-metal.com](http://cincinnati-metro-metal.com)

Distributed by: